



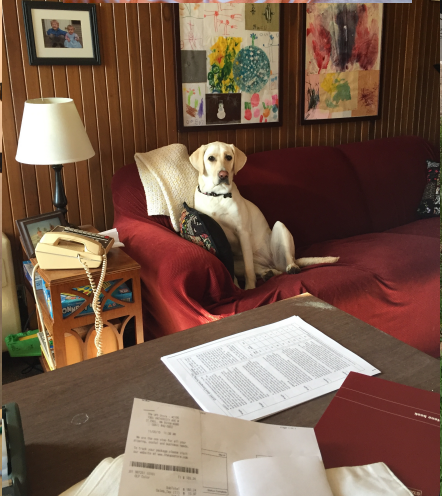
Lake Nokomis Presbyterian Church

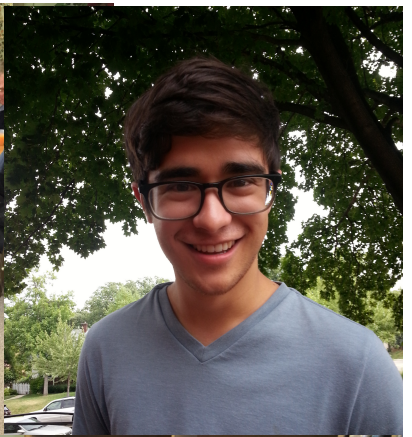


ANNUAL REPORT 2015

Congregational Meeting January 17, 2016







ANNUAL MEETING

of the Lake Nokomis Presbyterian Church, held on Sunday, January 17, 2016
at 11:45 AM at the church, 1620 East 46th Street, Minneapolis, MN.

AGENDA

CALL TO ORDER

1. Notice of meeting properly called
2. Quorum - 10% of active members (confirmed and on active rolls)
3. Prayer

REPORTS

REPORTS OF CONGREGATIONAL MEETINGS.....	2
February 1, 2015.....	2
December 20, 2015 – Election of Officers	4
STATISTICAL REPORT.....	5
PASTOR’S REPORT	6
FROM OUR PARTNERS	9
From Central Fellowship:.....	9
From Iglesias Fuego Pentecostes:.....	9
From Sacred Ground:	10
From St. Joseph’s Home for Children:	10
WORSHIP TEAM REPORT.....	11
MUSIC MINISTRIES REPORT	12
DEACONS’ REPORT.....	13
PERSONNEL TEAM REPORT.....	14
PRESBYTERIAN WOMEN REPORT	15
TITHING IN 2015.....	16
TREASURER’S SUMMARY AND FISCAL YEAR REPORT.....	17
ADMINISTRATION TEAM REPORT	17
Mission Giving and Endowment Fund Comparisons	21
2016 BUDGET – APPROVED BY SESSION	22
PROPOSED TERMS OF CALL	24

NOTE: Written reports are attached. This time is set aside for Congregational reflection on the work of God within and among us in 2015.

OPPORTUNITY FOR QUESTIONS AND COMMENTS ABOUT 2016 BUDGET
CONSIDERATION OF 2016 TERMS OF CALL FOR PASTOR

REPORTS OF CONGREGATIONAL MEETINGS

February 1, 2015

MINUTES OF THE ANNUAL CONGREGATIONAL MEETING

February 1, 2015

The members of Lake Nokomis Presbyterian Church met on Sunday, February 1, 2015 for the annual meeting of the congregation. Moderator Rev. Kara Root called the meeting to order at 12:20 pm in the Gathering Room at Lake Nokomis Presbyterian Church.

Acting Clerk Lindsay Hjermsstad declared a quorum. Pastor Kara Root opened the meeting with prayer.

M/S/P: Approved Minutes from two congregational meetings:

- January 19, 2014 Annual Meeting
- December 7, 2014 Congregational Meeting to Elect Officers

M/S/P: Dismiss Nominating Committee for 2014:

- Amy Leafblad
- Joyce Tesarek

Elected Nominating Committee for 2015:

- Sue Hensel (required ruling elder from session)
- Lisa Larges (returning member)
- Jose Valdez

Discussion of the Annual Meeting

The bulk of the meeting consisted of discussion of the following individual reports of LNPC's ministries:

1. **Pastor's Report**

- a. "Joyful year"
- b. Highlights:
 - i. Meetings with Lisa Larges; hopefully becoming a para-associate in the future. Grateful for what she brought and continues to bring to LNPC
 - ii. Cindy's Ordination
 - iii. House blessings (Marge)

2. **Deacon's Report**

- a. "Been a great year"
- b. Since there was flexibility in the deacon role, they felt they were able to do more for the congregation than they have in the past.

3. **Administration Team**

- a. Thank you to all who have helped LNPC in 2014
 - i. Cleaning out cupboards, changing water bottle, changing the sign out front, and helping out with hospitality with groups.
- b. Great use of Building in LNPC
 - i. Building was used 332 times
 1. 240 times was used by others outside of LNPC!

4. **Treasurer's Report**

- a. In 2014 we took less out of endowment than in the past 8 years!
- b. LNPC gave more in 2014 than in the past 8 years!
- c. Pledges are up for 2015
 - i. 27 units have pledged
 - ii. \$79,865 from members
 - iii. \$20,790 from non-members
 - iv. \$120,955 total
- d. Adjustment to Administration's 2015 budget

- i. -\$44,739 is the short fall after corrected pledges
 - e. Thank you Marty and Sue for being treasurers for LNPC
 - i. Marty will step off being Treasurer in June
 - ii. Would like to appoint new member soon
- 5. **Children's Ministry**
 - a. 2014 was a great year of acceptance of children during the services.
 - b. Re-configured sanctuary to family "units" to make children more included and welcomed during the service has been positive.
 - c. Seeing children as "little people" and having them be incorporated into the service and being valued during worship was been wonderful.
 - i. Will, Owen, and Grace will be the next confirmation group.
 - ii. Will continue to adapt to the needs to the congregation
 - 1. Youth Group
- 6. **Presbyterian Women**
 - a. Thank you for the gifts the group brings to LNPC and it's members:
 - i. Amy, Lisa, church sale, and Sunday school
 - b. Connection Saturday has been a success
 - c. Would like more women to join in the activities
- 7. **Personnel Team**
 - a. Recommended increase pay for Music Director, Office Administration and Pastor Salary.
 - i. Office Administration by 2%
 - ii. Music Director by 1%
 - iii. Pastor salary by 3%
 - b. Welcomed two new members in 2014!
 - c. Found and secured the church nanny for Sunday services
- 8. **Worship Team**
 - a. "Has been a holy time"
 - b. "Beautiful"
 - c. How much St. Joes appreciates our time there and how much we appreciate our opportunity to worship there and the significance of LNPC being there for the kids
 - d. Thanks for the Worship team:
 - i. Circle of Communion
 - ii. Christmas Eve Service
 - iii. Jeanne playing the harp
 - iv. Children being incorporated into worship
 - 1. Offering
 - 2. Prayers
 - 3. Food shelf offering
 - a. LNPC donated \$4000 to Simpson food shelf in 2014
- 9. **Community Team**
 - a. It has been wondering to see how many opportunities LNPC has to help others in the community
 - i. Our Saviours Housing
 - ii. Ham & Cherry Pie Dinner
 - iii. Summer Family Camp
 - b. Thank You to everyone that helped make our community connections happen and for truly being there for our community
- 10. **Music Director's Report**
 - a. New Hymnals! Thank You
 - b. 2014 there were many people who shared their musical talents
 - c. Violin, Harp, Oboe, Guitar, Cello, Trumpet

- i. Would like to have special music once every 3 months.
- d. Thanks for Jeanne and Kara; how well they work together to make the services special.
- e. Christmas Eve Service was “wonderful” and “Magical”.

The congregation discussed the pastor’s terms of call.

- Personnel Team recommended:
 - Salary Increase:
 - By 3%
 - 1 month +2 days vacation
 - 2 week: Continuing Education
 - \$2,800: Reimbursement Expenses

M/S/P: Approved Personal Team Recommendation to increase Pastor Salary by 3%, other terms of call stay the same as 2014.

The meeting was closed with the hymn “Blest Be the Tie that Binds” at 1:50pm.

Respectfully Submitted,

Lindsay Hjermstad, Acting Clerk

Rev. Kara Root, Moderator

December 20, 2015 – Election of Officers

LAKE NOKOMIS PRESBYTERIAN CHURCH
1620 46TH ST
MINNEAPOLIS, MN

The Congregation of Lake Nokomis Presbyterian Church met on Sunday, December 20, 2015, at 11:40 a.m. The meeting was duly called for the election of Session Class of 2018.

Moderator Rev. Kara Root called the meeting to order at 11:39 a.m. in the Sanctuary at Lake Nokomis Presbyterian Church.

Sue Goodspeed was appointed Acting Clerk and declared a quorum (at least 10% of the membership).

Susan Hensel, as chair of the Nominating Committee, presented the recommendations of the committee:

Elect as Session Class of 2018:

Amy Leafblad

Bill Fischer

Pastor Root called for nominations from the floor. There being none, she called for a vote. The slate was approved by unanimous acclamation.

The meeting was closed with prayer at 11:41 a.m..

Respectfully Submitted, Sue Goodspeed, Acting Clerk

STATISTICAL REPORT

Lake Nokomis Presbyterian Church Statistical Report 2015

PASTORAL RITES

Baptisms

Adult	0
Child	1
Weddings	0 (1 vow renewal ceremony)
Funerals	0

Communion was served at least once each month.

In 2015 we rejoiced at the birth of Helen Trieu to Andrea and Quang!

MEMBERSHIP NUMBERS FOR DENOMINATIONAL REPORTING PURPOSES

Number of members on the active roll as of January 1, 2015: 92

Additions

By Profession of Reaffirmation of Faith	0
By Letter of Transfer	0
Reinstated	0

Losses

Deceased	1
Transferred	0
Inactive Roll	0
Removed by Session	0

Total Active Members as of January 1, 2016: 92

Membership is one way in which we commit to being the body of Christ for one another. This year we shared worship and community with Central Fellowship and others who are not connected in formal church membership, but nevertheless are part of the Body of Christ alongside us.

SESSION

The session met in 11 regular meetings and 2 special meetings (electronic votes). Session also met in a two-day retreat.

In 2015 the session was composed of six ruling elders:

 Class of 2015: Sue Goodspeed, Amy Leafblad

 Class of 2016: Sue Hensel

 Class of 2017: Andy Cochrane, Diane Hansen, Andrea Domaskin

The session was moderated by teaching elder Rev. Kara Root. The clerk role was shared among the elders with annual minutes review performed by Andrea Domaskin.

Respectfully Submitted,
Kara Root, Moderator

PASTOR'S REPORT

I pray...that Christ may dwell in our hearts through faith, as we are being rooted and grounded in love. (from Ephesians 3:17)

This year I saw us growing deeper and spreading wider. Session discerned that we are being called into “deeper faithfulness”, and I saw this happening in all sorts of ways.

Here are some highlights for me:

- **We supported each other through life transitions**, like moves, babies, cancer and sabbatical breaks with prayer, rides, phone calls, meals and visits. We continue to grow in honesty and willingness to share what’s going on in our lives so we may share those and find God together within them. This gives me great joy.
- **Our life continues inspiring others** – we were featured in a Horizon’s article for our Artspace and inclusion of children, and in Presbyterians Today for our learning and practice of Sabbath. Lisa and I presented about Sabbath at First Presbyterian South Saint Paul for their adult ed class. I presented in January at Westminster Presbyterian a two part series – one on Sabbath & the other on discerning the activity of the Holy Spirit, and taught workshops on Sabbath at two different National Youth Worker Conventions – in San Diego and Louisville. Two different authors asked permission to share about our life together in books that will be coming out in 2016, and our article about Children’s involvement in worship was the #1 most shared article (by twice as much!) this year on the NEXT Church website. The staff of Edina Community Lutheran Church came over for a primer on Sabbath and tour of our space, to begin shaping their own Lenten focus on Sabbath, and we learned of two more congregations who have tried out Sabbath on either alternating or the 4th weekends – bringing the total count now to five!
- **A Pastor’s Grant for Spiritual Nurture** was given by anonymous donors who were inspired by our ministry and designated funds for spiritual growth – money from this grant helped send Lisa, Jeanne and Amy to a weeklong Compassionate Communication conference (with Theresa Latini), and also enabled us to host a two-day workshop on the Enneagram, where we welcomed in lots of guests to explore ways to deepen our connection to God and others.
- **We held four quarterly 24-Hour Deep Breath**, some that were just ourselves gathering to refresh ourselves on Sabbath, but others that welcomed friends, neighbors and strangers to try out Sabbath in their own lives.
- **We were blessed to share life and ministry with our intern Jon Bates**, who finished out his time with us with a very fun intergenerational scavenger hunt on the last week before summer. We shared gratitude with him and sent him onto new **things**.
- **PW continued exploring women in the bible**, laughed a lot, wrestled with hard questions, chatted about our lives and this world, enjoyed a wonderful Christmas party, and blessed Jan as she left.
- **A sadness for me this year** was watching the Eden Prairie Presbyterian Church Administrative Commission I have served on end the gracious separation process and proceed into court. I long for mutual respect and honoring of each other in the Body of Christ and continue to hold that congregation and the whole process in prayer.
- **We prayed, played and planned** at our Leadership team retreat in February and our Worship team retreat in July – these times away are rich and fruitful, as we listen to God and each other, explore how we can live in deeper faithfulness together, and I get to watch the creative sparks fly. This congregation is chock full of inspiring and committed people who aren’t afraid to bring their energy, intelligence, imagination and love to the table. What a gift!

- **This year we expanded in hospitality of our space** by opening Soryteller's Lodge to spiritual directors from Christos and Sacred Ground, and welcoming in Fuego Pentecostes – who fills these walls with joy and takes such wonderful tender loving care of our basement areas. This has led to other collaborative opportunities, like Sacred Ground's weekly Spiritual Director training class that now meets in our space, and our joint summer sale where Fuego members made a delicious lunch and shared the funds for the care of the LNPC building. Hospitality included purging and cleaning, reclaiming spaces, making things beautiful, moving new life into nooks and crannies. We created a Sitting Room that is now rented monthly by a meeting group, as well as an additional office space for a visiting seminary professor. We moved the kids into their own spruced up Sunday school room, and we threw away lots of closetsfull of accumulated stuff. Special thanks to those who care for the space with such TLC – especially Gary and Kathy Johnson, Dick Gross, Dennis Johnson and Marty Christensen, for all the odd jobs that keep the place clean, fixed and welcoming!
- **We deepened in our friendship and collaboration with Central Fellowship**, blurring the lines of separation between congregations - we are all the Body of Christ! Together we welcomed many neighbors, friends and strangers into worship, shared a class on life and death, celebrated at beautiful Christmas Eve and Easter services, prayed for one another and enjoyed fun potluck lunches.
- **We baptized Eleanor Van Deusen**, Theresa Latini's daughter, and I performed a marriage renewal ceremony for a neighborhood couple.
- **We learned from each other and deepened in honesty this year.** We held a book club for Richard Rohr's *Falling Up*, and had a series on Life and Death – both of which asked us to look at life's complexity and our own humanity. We deepened in Bible Study and worship as we slowed our roll to give more time to each scripture passage and get a sense of the larger story of Scripture in worship. This has opened up both communal and personal experiences of prayer that connect scripture with our lives - helping us seek God's presence in both places.
- **I got to connect with others in the broader community in interesting ways** bringing gifts of our life together into these conversations. I participated in a Community Listening Circle involving neighborhood clergy and community members to help a new urban retreat center figure out how best to serve the city. Sue Goodspeed and I shared a meal and conversation about Sabbath with the young people living in the Hospitality House, and I assisted at the Compassionate Communication Conference at Luther in August, helping people in ministry and training for ministry learn how to foster connection and navigate conflict in ways that build community.
- **We loved hanging out and eating together this year**, Ham and Cherry Pie Dinner, Easter breakfast, monthly Coffee & Donuts, 3rd Sunday potlucks that found themselves becoming a tradition this year (including a cake for the birthdays of the month!), a wonderful goodbye party for Jan, a picnic worship service with Edgcumbe Presbyterian this summer, quarterly meals after our Deep Breath worship services, and the Connections monthly gathering at a local coffee shop.
- **We said goodbye to Jan** this year, with a bittersweet celebration of gratitude for her 24 years of serving at LNPC, honoring her ministry in our community through so many chapters in our congregation's life. She has been a blessing beyond words.
- **Children grew into their leadership more this year.** 2015 saw the debut of Junior Choir and the launching of our "youth group" with classes taught by Andy Root that begin each Sunday at the coffee shop. Kids have increasingly contributed to worship with prayers, scripture reading, music, art, and lessons. Our toddlers are becoming preschoolers, and we're watching a new generation begin to arrive.

- **We've adapted as needs have changed.** This summer Carolyn stepped down from her role teaching Sunday school and took a much-needed sabbatical break for reflection and renewal. In the Fall I stepped into a teaching role with the K-4th graders, and am finding challenge and joy in connecting with the kids over their lives and the scriptures we're living with in worship as we learn from each other. We made staffing changes to accommodate growing needs for online management and communications support, and financial bookkeeping. We continue to pay attention to what is working, what isn't, and what is springing up brand new.
- **We were generous and brave in joining in the work of God.** We tithed our income every month to another expression of God's ministry in the world. This act of trust made us pluckier by reminding us that we are free - not bound by fear or scarcity, and illustrating our connectedness to countless others in the Kingdom of God. I am overwhelmed by the generosity of this congregation. In addition to the tithes (see the list elsewhere in this report) we gave monthly to Simpson Food Shelf, shared twice with neighbors who came to our door needing help making rent, supported Presbyterian missions offerings, and served meals quarterly at Our Saviour's Housing. And there is simply no keeping track of all the ways people shared, listened, reached out, prayed, visited, carried each other's burdens and shared each other's joys.
- **We joined in the larger church ministry by participating in ministry at the presbytery level.** Sue Goodspeed serves on Committee on Ministry (COM), Sue Hensel serves on Committee on Preparation for Ministry (CPM), I served on and Administrative Commission and we made several written proposals to presbytery to strengthen pastor support, congregational ministry and collaboration. We shared about our congregation and learned about others at the Ministry Fair, and continue to support our own Inquirer under Care: Ben Masters, as he makes his way through seminary.
- **We deepened in ministry with St. Joseph's Home for Children.** Our collaboration with Chaplain Amy grew, and we had a wonderful Movie Camp this year, as well as several meaningful worship services with St. Joes. We finished out the year with our final 5th Sunday Chapel there – after six years of that partnership. We look forward to deepening our partnership in other ways (such as helping with the vegetable garden they are planting this Spring!) We also look forward to the ways 5th Sundays will connect us to the broader community in varied and creative ways as we head into 2016.
- **Collaborating with Lisa was a joy and great honor for me.** Lisa's voice, insight and humor, her pastoral instincts and honesty, and her partnership in ministry are such a gift to our community, and to me especially.
- **I grew as a pastor.** My weekly text study with other clergy strengthened exegetical skills and insight into scripture and God's work in the world. My spiritual director and monthly pastor retreats supported me in being reflective and present, and helped me remain a real and honest human being in the midst of my work. Doing spiritual direction with youth workers at the National Youth Worker's Convention brought me back to my core ministry identity and training that shapes how I pastor: *the trust that God is already active here, and it is our job to pay attention and join in.* Opportunities to travel with my family brought me home feeling grounded in the greater reality of God's world and our connectedness as human beings, and inspired my imagination to approach my work with fresh eyes and a creative outlook. And through all of this, I come back to what is true: *I love being your pastor!*

As I consider the year that has ended and the one opening in front of us, I feel grateful and awed at the sweet joy of our life together as a congregation, and absolutely certain of God's love and leading. I'm looking forward to all the surprises the Spirit has in store in 2016!

Thank you for your faithfulness, Lake Nokomis Presbyterian Church!

Rev. Kara Root

FROM OUR PARTNERS

From Central Fellowship:

The members of Central Church are very grateful for the opportunity to share space, worship, friendship, and fellowship with Lake Nokomis Presbyterian Church in 2015. Your generosity has allowed us to stay together in a stress free environment while nurturing our faith and sense of family. Most of the people who come to the service also come to the Adult class at 9:15 so we have been able to explore each topic from more perspectives. We continue to be a small group. However, many of our members represent ministries in and out of Urban Ventures that are nurtured by the energy and prayer that comes out of our fellowship. Each week members share updates on Ready/Set/Work, MADD Dads, the Family Center, and Studio 180. We are able to support those ministries in prayer.

Central Church continues to be a nest of sorts that people can feel safe and loved for as long as they are able to be with us. Thank you Lake Nokomis congregation for continuing to make us feel so warm and welcome!

Kathy Erickson

Central Church Fellowship

From Iglesias Fuego Pentecostes:

We have experienced God this year by seeing positive changes and witnessing miracles in the congregation's families. We are grateful that God always provides. We're thankful that he answers our prayers. Psalm 95:2-3 says, "Let us come before him with thanksgiving and extol him with music and song. For the Lord is the great God, the great King above all gods."

Antonio Galvan

From Sacred Ground:

We held our class each Tuesday evening from the end of September to the first of December. Where Sacred Ground (and myself) experienced God while at the church was in the feeling of openness, acceptance and inclusion we felt every time we entered the building. We loved the quiet and spaciousness.

What I celebrated is the feeling that we were treated so respectful to be entrusted with the use of the building. The only disappointment were the chairs we had to use in the second floor Chapel. For three hours each week we found we needed to provide our students with more comfortable chairs, which we purchased.

All in all, 2015 at Lake Nokomis was a peaceful, holy time for which we are so grateful to have.

Blessings,
Maggie Klaers
Sacred Ground Teacher

From St. Joseph's Home for Children:

Never do ministry alone! Co-workers in ministry are important, as demonstrated by Jesus when he first sent his disciples out in pairs (Luke 10:1). The "two-by-two" not only provided a credible witness to the miracles performed, but allowed the partners to share in the JOY of being part of the life-changing work of God in community. For the past several years, Lake Nokomis Presbyterian Church members have journeyed with St. Joseph's Home for Children as beloved community partners, multiplying the joy here at St. Joe's

Each worship service, message, movie camp experience, meal, labyrinth brick, Bible, book, piece of paper, art work, candy, cookie, song, bracelet, prayer, candle, rock, hug, blessing, and monetary gift has been shared with the kids and staff members as an extension of God's spirit of love and healing power. You have graciously opened your hearts and extended your hands to us, welcoming us with a spirit so sweet and powerful as you have faithfully made meaning with our kids on all the fifth Sunday services each year. And, as neighbors and friends in Christ, and you have blessed me beyond words, as I have found a kindred spirit among you. I just want you to know how grateful I am for each of you!

My prayer is this: May God continue to bless your work and ministry "beyond what you could ever think or imagine" as you come alongside other community partners! And please know you are always welcome at St. Joe's as neighbors, partners in ministry, but mostly as friends. Thank you, thank you, thank you; from my overflowing heart.

Love Always, Pastor Amy
Chaplain, St. Joseph's Home for Children

WORSHIP TEAM REPORT

Last spring, Sue Hensel, in an newsletter article, wrote that the Worship Committee was reshaping our worshipping life in order to better meet a need that we had frequently heard from church members – the longing to dive deeper into Scripture. Beginning in the fall of 2015, we re-designed Saturday evening services to provide creative, contemplative, and interactive ways to explore the passage of Scripture that had been introduced in worship the previous Sunday.

This means that we take two weeks to cover a passage, and often talk about that same text in Sunday School as well. Sunday School provides an opportunity to study the text and discuss it, Sunday morning worship gives us a chance to reflect on a text through the sermon, drawing, through hymns and prayer; now, our Saturday evening Prayer Services offer the chance to go deeper with a text through reflection stations. We designed these services to be invitational, and “user-friendly” so that each person can listen for the Word of God in a way that speaks to them.

We first experimented with the Prayer Stations idea in the Saturday services between Easter and Pentecost. Through those services and our Sunday morning worship, we focused on our stories of meeting the resurrected Christ.

Throughout the year we continued to draw on the “Narrative Lectionary”. A lectionary is a listing of passages from Scripture to be read each week. The Narrative Lectionary is designed to follow the arc of the Biblical story, from Genesis through Revelation each year. Again this year we reflected on texts from the Books of Moses (Genesis through Leviticus) the kings and leaders of Israel, the Prophets, the Gospels of Matthew and John, and Paul’s letter to the Romans.

Other Highlights from our Worship Year

- During Lent we carried ashes to remind us of our brokenness, and stones from the Baptismal Font to remind us of the grace that is ours.
- We worshipped with St. Joe’s four times.
- We introduced drawing in worship, to help kids and adults engage with Scripture.
- After Easter we shared stories of meeting the resurrected Jesus.
- We shared an outdoor worship service with Edgcumbe Presbyterian.
- Noted story-teller Mark Yaconelli was an invited guest preacher.
- “A Thrill of Hope”, our Christmas Eve Service included interactive story telling, special music, reflection, and a dance party. Yo Sheep!!

This year we send out a giant Thank You to Sue Goodspeed as she goes off Worship Committee and we warmly welcome Bill Fischer who begins serving on this committee January of 2016.

Respectfully Submitted, Lisa larges, Sue Hensel, Sue Goodspeed, Jeanne Rylander, Kara Root

MUSIC MINISTRIES REPORT

2015 was another wonderful year musically at LNPC. Despite being fairly small we work to bring beauty and life to the text through music. It is a pleasurable challenge for all of us. This year in choir we lost Lucy but have been thrilled to have Charlotte singing with us!

You may have noticed the sweet sounds of our Children's choir. During August I offered a summer choir camp to get us started on the basics of breathing and singing. If you watch closely you can see those tummies moving out and in as they sing. We have had a lot of fun learning about singing in church and the gift that we offer to the congregation musically. They have been quite brave I think. I keep telling them they are small but mighty! If you have enjoyed their music please tell them, they would love to hear from you!

We had many wonderful musicians share their music with us this year. It is always fun to look back and remember. Here are some musical highlights from 2015.

Ash Wednesday we had both Christina and Anne-Sophie on cello and violin. Beautiful!

Good Friday we were blessed to have Christina again. This year both girls graduate so I will try to nab them for one more season before they head off to college!

Easter Sunday we had a new Trumpeter, Geno. He loved playing for us and hopefully will be with us again this year.

In May we enjoyed another concert from the Trinity students. As always, a blessing for singers and listeners!

We did enjoy the fancy finger-work of Charles our favorite sub last year!

This Fall Andrew happened to be in town on the very day that I was out of town. It is always fun to have him back with us.

December was filled with wonderful music. The children did a lovely job of leading our Advent opening ritual including singing, lighting candles and reading the prayers. On December 20th they sang a beautiful Lullaby. They are really growing in their ability to participate and share in the service and it is delightful to see.

Don and I enjoyed playing guitar and Melodica for the prayer service on December 12th. It was a new instrument and new music for us, which was really fun! On Christmas Eve, I drafted my boys to make up a rhythm band that led what Kara and I have named the "Dance Party" portion of the service. They added a lot and we had a lot of fun doing it!

The Choir sang their hearts out during Advent and brought such beauty and tenderness to the season. As is our tradition, the choir sang for all services during Advent. On Dec. 20th they sang four different anthems and really filled the sanctuary with beauty!

Also on Christmas Eve we got lucky with a fabulous cellist, Adrianna and her darling daughter Una! It was a pleasure playing with her and we will definitely ask her back!

That sums up the year. If you are interested in learning more about ways you can join in the music, please talk to me. Also, your feedback is always welcome, please don't hesitate to call me with any questions!

Fondly,

Jeanne Rylander

Music Director

DEACONS' REPORT

This year the Deacons focused their work on caring for our congregation. We visited members, made phone calls to check in with people, sent cards, brought cakes to church, and helped with arranging for meals and rides. The Deacons continue to meet with the Session each month to lift up the needs of the congregation and discern how best to care for our members. Most important, the Session and Deacons spend time together in prayer for our congregation.

Funeral Planning and End-of-Life

Out of conversation and reflection the Deacons and Session realized that it could be helpful to talk together about funeral planning, end-of-life decisions, and facing major life changes. We want to know what each members values and wishes are so that we can better honor them.

- What hymns do you want sung at your funeral?
- How do you want to be cared for in the transition from life to death?
- What are the values that inform your decisions about changing life circumstances?

The more we can articulate the answers to these and other questions with one another, the greater the likelihood we will be able to care for and value one another.

We created a four-part series that we held together with Central Church. As part of that series, we brought together a wealth of resources, that include helpful worksheets for planning and preparing for end-of-life care, funerals, and lileaving a spiritual legacy.

A binder containing all of those resources is in the church office. With the binder are flash drives containing all the same material, which are available for anyone to take.

Respectfully Submitted

Lisa Larges, with Viv Whitfield and Dick Gross

Special thanks to Carolyn Cochrane who finished up her service with the Deacons earlier this year.

PERSONNEL TEAM REPORT

In most years, participation on the Personnel Team means breakfast with staff. Oh, and soliciting reflections from members and colleagues and chatting with staff about how things are going. Things were different this year...

Session realized that changes were needed. With Marty stepping down from Treasurer responsibilities, it was time to assess the way we handled our bookkeeping. With the drastic changes in the way the world communicates – through electronic and web-based medium rather than on-site, phone/mail based – and the amount of time the Pastor was spending on communications that should be handled elsewhere, we needed to reassess the staffing of the office.

Personnel worked closely with Session to create position descriptions for our new, necessary model. Positions were posted, applications were received, and we are now working into the ‘new.’ In welcoming Krysta Niznick as our Bookkeeper and Dennis Sanders as our Office Manager/Communications Specialist, we are walking down a new road, still finding our way, but confident that we are on a good path.

The most difficult part of this – really the only difficult part – was saying farewell and Godspeed to our dear Jan Johnson, who worked with us in ministry for 24 years. A celebration of her time with us was held in November, with love and tears, good wishes and regret.

Part of the ‘new’ way means that staff are on site less frequently, but Dennis does keep regular office hours (Tuesday and Friday). Much of the work of both Krysta and Dennis is accomplished off-site, using web-based connections.

I am so grateful for the wonderful, loving team serving on Personnel: Linda Leicht, Terry Gilberstadt, and Amy Leafblad. We are all grateful for the support and direction of Session and of others who shared their wisdom and encouragement as difficult decisions were made.

Pray for our transition here, and for Jan’s transition to the next leg of her journey.

With care,

Sue Goodspeed
Chair, Personnel

PRESBYTERIAN WOMEN REPORT

The Presbyterian Women meet on the third Wednesday of the month for a little social time and a bible study led by Kara. In December we have a Christmas luncheon to which everybody in the congregation is invited. In May we have a spring luncheon to which all can come also. We do not meet in the summer.

This year we have continued using a book about our foremothers which we began last year. Any woman in the church is always welcome to come. Our attendance has dropped off due mostly to the fact that we are aging and are not able to be as active as we would wish.

Also due to the above we did not have a bazaar again this year. Some of the younger women held a sale in partnership with Iglesia Fuego Pentacostes who meet in our church for their services. They raised a substantial amount of money to be used for church maintenance.

Respectfully submitted,

Barbora Wilson

TITHING IN 2015

What is a tithe?

The biblical covenant of tithing, giving 10% of what you earn back to God, has shaped the people of God throughout history, as a covenant of trust and faithfulness with God. We believe we participate with God in healing and hope-building in the world. Tithing is one way of consciously joining in.

Why tithe?

Tithing helps us remember that everything, actually, belongs to God, and we are merely stewards of what we've been given, called to generously share and bravely participate. We get to be part of what God is doing in other communities and lives, as well as our own. We are all connected!

Our Congregation's Tithe:

As a congregation we tithe 10% of our income each month to other expressions of God's ministry in the world. We've been doing this for a year, and have watched our impact as a congregation ripple far beyond ourselves as we join with others who are sharing God's work.

Why do we tithe as a congregation?

Tithing reminds us that this is God's church and God's ministry, and we are participants. It helps us move from a place of anxiety about finances, to a place of trust, from a mindset of scarcity to trust in God's abundance. Instead of isolated and self-protective, tithing also helps us see ourselves as part of God's greater ministry, connected in the wide world to all the other folks living out the love and hope of Jesus.

Who have we given our tithes to?

In 2015 we gave our tithes to:

- St. Joseph's Home for Children for their spiritual life programs
- The Disabilities Task Force of the Presbytery to help host a conference on including people with disabilities in worship
- Bay Lake Camp, to support their camps and ministries
- The Ready? Set, Work! and the Center for Fathering programs at Urban Ventures.
- The Center for Social Healing helping new arrivals from Asian countries settle in and find community
- Peace Beyond Understanding, to help rebuild a beauty salon destroyed by racially-motivated arson in Jasper, Texas.
- Twice to Our Saviour's Housing, to support housing ministry in Minneapolis
- Missionary Annamarie Monkemeir, a nurse working in Jordan in a Syrian refugee camp
- TRUST coalition of churches for community ministry in South Minneapolis
- Exodus Lending, helping people break free from the cycle of payday loans

What if I tithed?

Some of us already tithe, others of us have never thought about it. To the left is a chart of what tithing might look like for you.

Giving and Sharing

Giving, no matter how much, is always a way of living in gratitude. Sharing what we have with others reminds us we are God's beloved children, and that we all belong to each other. And it feels great. Every time we practice generosity, we are reminded again *who* and *whose* we are.

Monthly Giving		
Annual Income	10%	5%
20,000	\$167	\$84
40,000	\$333	\$167
60,000	\$500	\$250
80,000	\$667	\$333
100,000	\$840	\$417
150,000	\$1,250	\$625
200,000	\$1,667	\$840

TREASURER'S SUMMARY AND FISCAL YEAR REPORT

'Transition' seems to be the name of the game. A couple years ago, it was saying farewell to Treasurer Lee Sorenson. This year, Marty Christensen has stepped aside from the Treasurer's role, a new 'bookkeeper' position has been created, and Krysta Niznick has been hired on a contract basis to fill it. Sue Goodspeed continues as 'Treasurer,' but the title carries many fewer responsibilities than it once did. We all lift up waves of thanks and gratitude for Marty's contributions over the past three years. At the same time, we are moving in a much more sustainable direction, as the ways in which we 'do church' with one another continue to evolve.

We finished the year well, taking only \$10,000 from the Endowment Fund during the year, and ending the year with about \$1,000 more in the bank than we began.

We again were recipients of the generosity of Westminster Presbyterian, as they granted us \$10,000 and funded \$1,000 of the costs of Movie Camp, the week-long gift Rev. Dean and Kristin Seal bring to the children of St. Joe's.

We also distributed \$9,939 in Congregational Tithes. This is our first full year of tithing – and God has been moving powerfully through this commitment.

Sue Goodspeed, Treasurer

ADMINISTRATION TEAM REPORT

We held 8 meetings in 2015. Building use is on the rise with more than 15 groups regularly in the building. Last year 388 groups that reserved a space. If you were to include LNPC, Central, FRNNG and Pentecostes that would add 222 more times. with all that traffic we are making a plan on building upkeep and maintenance.

Last fall a toilet in the basement malfunctioned causing a very large water bill. A roof fund was added to the budget this year to plan for replacement in 3 to 5 years.

With Session approval 10,000 was taken from the Endowments to meet our obligations.

The Administration Team want to thank all the volunteers who care for our building and grounds. We are blessed to have you.

Respectfully submitted.

Gary Johnson

Dick Gross

Kara Root

Lake Nokomis Presbyterian Church						
2015 Cumulative Report						
Assets						
	LNPC	\$18,463.80	GENERAL FUNDS - US BANK BALANCE 1/5/2015 - unreconciled			
	Deacons fund	\$1,206.21	included in General Fund total			
	Simpson food shelf					
	Memorial fund	\$9,348.40	BALANCE 1/5/2015			
	Endowment fund	\$45,831.56	BALANCE 1/5/2015			
	Piano fund	\$7,021.62	BALANCE 1/5/2015			
		\$80,665.38				
				To Date	<u>2015 Budget to Date</u>	2015 Budget
	Beginning Balance		historic # - not actual	\$5,598.99		
	Receipts			\$173,968.14		
	Disbursements			\$173,410.19		
	Closing Balance			\$6,156.94		
				\$200.76		
	Ending Balance		\$0.00	\$5,956.18		
RECEIPTS						
	Weekly Offerings			112,730.26		
	Miscellaneous Receipts			23,774.58		
	Special Receipts			21,517.04		
	TOTAL GENERAL FUND RECEIPTS			\$158,021.88		
	Designated Receipts			15,946.26		
	TOTAL RECEIPTS			\$173,968.14	\$144,663.50	\$144,663.50
DESIGNATED RECEIPTS						
	Food Pantry+Souper Bowl			4,896.68		
	Building Maintenance Fund			1,555.25		
	P PerCapita			1,086.39		
	P Mission PCUSA			721.00		
	P One Great Hour of Sharing			0.00		
	P Pentecost Offering PCUSA 60%, LNPC 40%			20.00		
	P Peacemaking Offering PCUSA 25% PCUSA, 25% PTCA, 25% LNPC			40.00		
	P Christmas Joy PCUSA			0.00		
	Retreat Income			1,020.00		
	Our Saviour's Meal Donation			185.00		
	Movie Camp			50.00		
	PW Education donation			146.50		
	PW Utility donation			250.00		
	Enneagram workshop			1,092.26		
	Jan Gift			4,165.00		
	Ani & Zane Gift			375.00		
	Miscellaneous			343.18		
	In and Out			0.00		
	Total Designated Receipts			\$15,946.26		
WEEKLY OFFERINGS						
	Adult Pledges			109,032.28		
	Initial Offering			115.00		
	Open Plate			1,732.98		
	13th Month giving			550.00		
	Total Weekly Offerings			\$111,430.26		
MISCELLANEOUS RECEIPTS						
	Copier use			49.18		
	8th Discipline			90.00		
	LaLeche League Donation			105.00		
	FRNNG Donation			4,200.00		
	Room Donation - Carlson			900.00		
	TOPS Donation			100.00		
	Yoga Class Donation			780.00		
	Central Church donation			2,820.00		

Pastor's Spiritual Formation Grant

	To Date	2015 Budget to Date	2015 Budget
O City of David	50.00		
Iglesias Fuego Pentecostes	10,730.00		
Storytellers' Lodge	429.27		
Basement use donation	1,050.00		
Misc room donation	1,280.00		
Ham and Cherry Pie Dinner	845.00		
Giving Tree	100.00		
Other incl. interest earned	246.13		
Total Miscellaneous Receipts	\$23,774.58		
SPECIAL RECEIPTS			
Transfer from Endowment	10,000.00		
Westminster Grant	11,000.00		
Easter - LNPC envelope	300.00		
Thanksgiving - LNPC envelope	25.00		
Christmas - LNPC envelope	50.00		
Special Events/Deep Breath	142.04		
Total Special Receipts	\$21,517.04		
DISBURSEMENTS			
ADMINISTRATION	136,281.14		\$139,638.50
Per Capita	\$3,080.38	\$2,999.00	\$2,999.00
Office Expense/Postage	\$4,273.14	\$5,000.00	\$5,000.00
Bank Service Charge	36.59		
Copier	2,577.49		
Postage	486.78		
Other	1,172.28		
Tech Replacement Fund - 3-yr cumulative	\$0.00		\$500.00
Building Maintenance/Equipment	\$6,193.54	\$4,210.00	\$4,210.00
Fumace	2,715.00	3,100.00	3,100.00
Lawn and Snow Care	0.00	110.00	110.00
Other/Fumace emergency	2,982.20	1,000.00	1,000.00
Building Supplies	\$496.34	\$300.00	\$300.00
Janitorial	\$2,748.17	\$3,850.00	\$3,850.00
Contracted service	2,700.00	3,600.00	3,600.00
Janitorial Supplies	48.17	250.00	250.00
Insurance - Comprehensive & Umbrella	\$3,894.80	\$3,500.00	\$3,500.00
Property Tax	\$600.73		
Other taxes and assessments	\$0.00	\$4,000.00	\$4,000.00
Utilities	\$15,625.18	\$15,000.00	\$15,000.00
Electric	2,643.89		
Heating	7,308.25		
Gas	2,844.00		
Telephone	728.64		
Water	1,041.25		
Trash	1,059.15		1,000.00
Other	0.00		
Administration Committee	\$99.00	\$0.00	0.00
Personnel Committee	\$0.00	\$100.00	\$100.00
Salaries	\$99,766.20	\$99,679.50	\$100,179.50
Pastoral Ministry	\$71,039.94	\$71,690.50	\$71,690.50
Salary	5,029.93	5,030.00	5,030.00
Housing	46,000.08	46,000.00	46,000.00
Pension and Medical Insurance	18,086.16		17,960.50
Reimbursed Expenses	681.45	800.00	800.00
Continuing Education/Book Allowance	942.32	2,000.00	2,000.00
Office Administrator	\$13,449.89	\$13,104.00	\$13,104.00
Music Department Salaries	\$11,434.16	\$11,795.00	\$11,795.00
Director	11,434.16	11,445.00	11,445.00
Continuing Education	0.00	350.00	350.00
Bookkeeper	600.00		
Nanny	\$1,544.76	\$1,440.00	\$1,440.00
Federal Tax Liabilities - LNPC	\$1,968.11	\$1,650.00	\$1,650.00
Social Security	1,566.34		
Medicare	401.77		
Fed/State Penalties	129.82		
Workers Comp. Insurance	199.52		\$500.00
NURTURE/EDUCATION	\$2,066.08	\$900.00	\$900.00

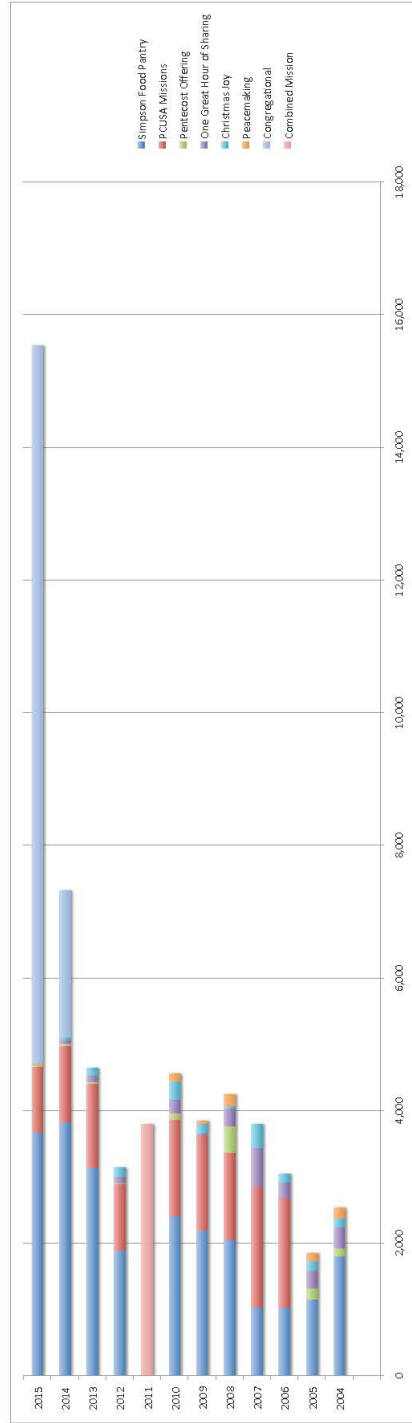
3-yr cumulative - 2015 used in 2014

35% of total compensation

				To Date	2015 Budget to Date	2015 Budget
	Confirmation			\$0.00	\$0.00	\$0.00
	Candidate Under Care			500.00	500.00	500.00
	Adult Ed			0.00	200.00	200.00
	Children & Youth			1,566.08	200.00	200.00
					\$0.00	
	COMMUNITY OUTREACH			\$3,175.23	\$2,125.00	\$2,125.00
	Community Team			1,063.05	0.00	0.00
	General Assembly, Synod etc.(see Designated Disbursements)			0.00	1,000.00	1,000.00
	Trust Churches			0.00	100.00	100.00
	Congregation & Community Outreach programs			0.00	1,025.00	1,025.00
	Our Saviour's meals			244.90		
	Other			1,867.28		
	WORSHIP			\$3,517.20	\$2,000.00	\$2,000.00
	Sanctuary Supplies			262.57	200.00	200.00
	Choral Scholar			1,082.50	1,000.00	1,000.00
	Pulpit Supply			375.00	200.00	200.00
	Music Supplies/Musicians			980.41	600.00	600.00
	other			816.72	0.00	
	MISCELLANEOUS			\$151.52		
	TOTAL GENERAL FUND DISBURSEMENTS			\$145,039.65	\$144,663.50	\$144,663.50
		GENERAL FUND NET		\$12,982.23		
	DESIGNATED DISBURSEMENTS					
	Congregational Tithe			11,336.30		January disbursement \$1,397 for 2014
	Retreat Expense			0.00		
	Food Pantry*			7,487.36		January disbursement \$1,657.28 for 2014
	Memorial Fund Disbursements			0.00		
	Movie Camp			1,500.00		
	Gift for Jan			4,000.00		
	(PRESB) Per Capita (see Admin)			0.00		
	(PRESB) One Great Hour of Sharing			50.00		January disbursement \$50 for 2014
	(PRESB) Witness Offering			0.00		
	(PRESB) Pentecost Offering(6)			36.00		January disbursement \$12 for 2014
	(PRESB) Peacemaking Offering (Presby).75			30.00		
	(PRESB) Thanksgiving Baskets			0.00		
	(PRESB) Christmas Joy			55.00		January disbursement \$55 for 2014
	(PRESB) Mission Expense			2,768.00		January disbursement \$1,147 for 2014
	TOTAL DISBURSEMENTS			\$160,966.01		
		TOTAL NET		\$13,002.13		

Mission Giving and Endowment Fund Comparisons






Year	Simpson Food Pantry	PCUSA Missions	Pentecost Offering	One Great Hour of Sharing	Christmas Joy	Peacemaking	Pres. Women	Congregational Tithe	Combined Mission	TOTAL	Endowment Withdrawals
2004	1,806		117	320	136	150				2,529	
2005	1,156		165	270	145	110				1,846	
2006	1,035	1,660		220	125		1,700			4,740	5,000
2007	1,030	1,829	400	585	345		1,700			5,489	10,000
2008	2,047	1,322		265	40	165	1,900			6,139	15,000
2009	2,195	1,437		20	150	38	1,400			5,240	10,000
2010	2,405	1,464	90	205	280	105	1,050			5,599	20,000
2011	1,888	1,001	20	100	123		700	3,788		3,788	40,000
2013	3,136	1,272	20	100	105		200			4,633	30,000
2014	3,831	1,147	30	50	55		200	2,199		7,512	10,000
2015	3,667	1,000	20			20		10,823		15,530	10,000



NOTE - PCUSA giving is not recorded in 2004-2005, nor are PW giving totals.

2016 BUDGET – APPROVED BY SESSION

Categories		Budget 2015	Actual 2015	Proposed 2016
	INCOME (Not Designated)			
	Pledge Giving		99,000	
	Open Plate		1,600	
	Building Use:			
	FRNNG		3,850	4,200
	Fuego Pentecostes		9,730	12,000
	Central Church		2,570	3,000
	Current users: Yoga/TOPS/Carlson/...		1,950	
	Nokomis Hall (misc)		1,830	
	StoryTellers' Lodge		430	
	Grants:			
	Westminster		11,000	
	TOTAL RECEIPTS*		133,712*	
	*non-designated, w/o Endowment Funds			
	EXPENSES			
	Congregational Tithe	1/10 of above	11,336	(15,155)
	Per Capita (PCUSA)	2,999	3,080	3,014
	Office Expenses	5,000	4,091	5,000
	Copier		2,432	
	Postage		487	
	'Other'		1,172	
	Tech Replacement Fund	500		500
	Building Maintenance Fund	NA		5,000
	Building Maintenance	4,510	5,690	5,415
	Furnace	3,100	2,489	2,715
	Lawn and Snow	110	0	200
	Building supplies (paper/lightbulbs...)	300	496	500
	Other/emergency	1,000	2,705	2,000
	Janitorial	3,850	2,425	3,850
	Contracted Service	3,600	2,400	3,600
	Supplies	250	25	250
	Property tax/assessments	4,000	600	600
	Insurance (comp & umbrella)	3,500	3,895	3,825
	Utilities	15,000	12,815	18,216
	Electric		2,286	2,400
	Gas/Heat		8,256	11,376

	\$51,140	Worship
	\$34,507	Mission
	\$15,238	Education
	\$27,069	Administration/Communication
	\$36,906	Building use and maintenance

	Telephone/internet (new)		662	1,140
	Water/stormwater fee		643	2,100
	Trash	1,000	968	1,200
	Other			
	Staff/Salaries:	100,180	91,230	101,636
50 %	Pastoral Ministry	71,691	64,595	71,691
1 %	Salary+Housing	51,030	46,778	
2 %	Pension and Medical	17,861	16,579	
2 %	Reimbursed Expenses	800	465	
	Continuing Ed/Book All.	2,000	773	
	Music Department	11,795	10,480	11,795
	Director	11,445	10,480	
	Continuing Education	350	0	
	Communications and Office Manager	13,104	12,279	10,800
	Bookkeeper	NA	600	3,600
	Nanny (contract)	1,440	1,434	1,500
	LNPC Tax Liabilities	1,650	1,813	1,650
	Workers' Comp	500	199	600
	Committees:			
	Administration	0	0	
	Personnel	100	99	100
	Education	900	2,032	900
	Children	200	1,532	
	Confirmation	0		200
	Adult	200		
	Candidate Under Care	500	500	500
	Community/Outreach	2,125	3,101	2,000
	Team expenses + 'other'		2,856	
	PCUSA	1,000*		1,000*
	TRUST	100		
	Our Saviour's Meals		245	
	Worship	2,000	3,305	2,000
	Sanctuary supplies	200	263	
	Choral Scholar	1,000	1,082	
	Pulpit Supply	200	375	
	Music supplies/musicians	600	789	
	TOTAL EXPENSES	144,664	132,364	151,556 + tithe = 166,711

- offset by individual designated giving to PC Missions

PROPOSED TERMS OF CALL

The Lake Nokomis Presbyterian Church, Minneapolis (City), in accordance with the Form of Government (G-2.0804), hereby requests the Presbytery of the Twin Cities Area to approve the terms of call for the year **2016** for:

Teaching Elder's Name: Rev. Kara K. Root

Position Title: Pastor

Full or Part Time: Full % if part time

Manse? No Yes If "yes," indicate "fair" rental value": \$

COMPENSATION				
Salary	Housing Allowance	Utilities Allowance	Soc. Sec. Offset	Deferred Income
\$ 5,030	\$ 46,000	\$ -	\$ -	\$ -

BENEFITS			
Pension	Vacation	Continuing Education Leave	Other*
35%-full	One month+2 days	Two weeks + 2 days	\$ -
*Other (specify):			

REIMBURSED EXPENSES			
Automobile Allowance	Book Allowance**	Continuing Education Allowance**	Other*
\$ -	\$ -	\$2,000 cumulative over 3 yrs	\$ 800 cumulative over 3 yrs
*Other (specify): * general expenses; ** \$2,000 may be divided as needed between CE and Book			

ATTEST:

Clerk of Session: _____

Moderator: _____

Date: _____

Date: _____

Approved by vote of the congregation January 17, 2016.